

Residential House Extension, London Suburbs

Project Value: £45,000

Client: Private Clients

Problem:

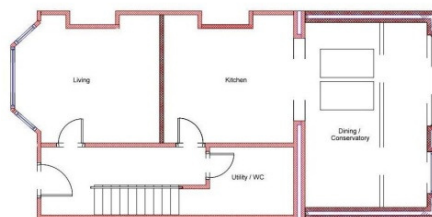
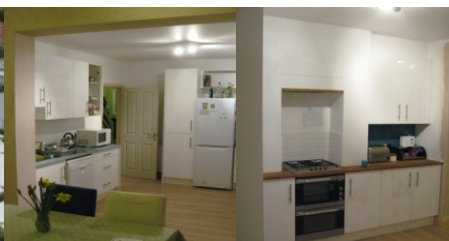
PCMS were enlisted for design and project management services by a young family living in a terraced house that had been unaltered since the 1960s. The existing house was inadequate – there was a small galley kitchen, no downstairs cloakroom, a lack of proper insulation and poor quality replacement windows. A small single-skinned lean-to had been tacked on to the back of the property. The family required extra space and a reconfigured internal layout to make their living accommodation more suited to their needs.

Solution:

PCMS looked at re-utilising the internal space in order to meet the family's requirements. Although the terraced house had no side and limited rear access, we worked with the builders to ensure they could work safely on site. Neighbours were also consulted on the proposed changes. The lean-to was demolished, and replaced with a modern single-storey extension across the back of the house which was designed to let in lots of natural light. A wall was reinstated to create a comfy living room at the front of the house, and a new much larger kitchen at the back. Meanwhile, the old kitchen was converted into a utility area and cloakroom.

Result:

The family are very pleased with the huge improvement to their home; the light and airy dining/breakfast/garden room provides more flexible space than before. Large folding doors on the back lead directly into the garden. They also have a dedicated living room, a larger modern kitchen and a downstairs cloakroom. Following the project, fuel bills have been considerably reduced by improving insulation and replacing windows.



PCMS

pcmsdesign.co.uk
01844 202932

C
A
S
E

S
T
U
D
Y